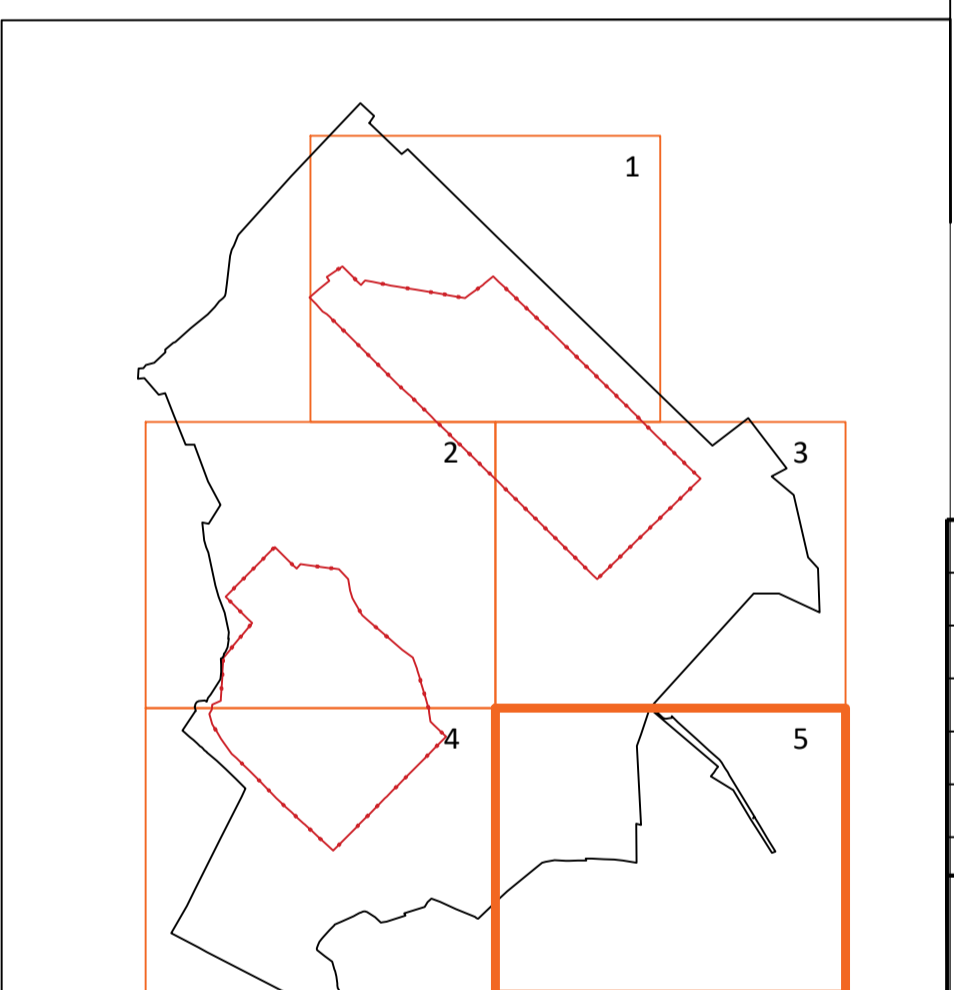


- Legend**
- PV TABLE
 - EXISTING ACCESS ROAD TO BE UPGRADED
 - NEW ACCESS ROAD
 - BRIDGE OVER DRAIN WITH ACCESS ROAD
 - INVERTER STATION AND CONCRETE PAD
 - INVERTER HARDSTANDING AREA
 - DEER FENCE
 - BRIDGING STRUCTURE OVER DRAIN FOR THE DEER FENCE CROSSING
 - ACCESS GATES
 - SHEEP FENCE (AROUND DRAINS)
 - PEAT STORAGE AREA
 - SUBSTATION AREA
 - TEMPORARY COMPOUND AREA
 - SWITCHBOARD (NORTH SIDE)
 - 80.6m ACCESS TRACK LEVEL
 - EXISTING FIELD DRAIN
 - FIELD DITCH BUFFER 20 M
 - EXTENSION TO EXISTING FIELD DRAIN
 - CLEAN WATER CUT-OFF DRAIN
 - SEDIMENT LADEN DRAIN
 - SETTLEMENT POND
 - CLEAN WATER CUT-OFF DRAIN OUTFALL
 - PROPOSED CULVERT
 - CROSSING CULVERT
 - COLLECTOR DRAIN
 - COLLECTOR DRAIN FLOW PATH
 - CONNECTOR DRAIN
 - FLOW RESTRICTOR
 - OVERFLOW DRAIN
 - OVERFLOW DRAIN FLOW PATH
 - BUND DEWATERING SYSTEM AND OIL SEPERATOR (SEE NOTE 9)



KEY PLAN

DRAINAGE DESIGN NOTES

1. ALL DRAINAGE SUBJECT TO MICRO-SITING AND OPTIMISATION ON SITE.
2. LOCATIONS OF COLLECTOR DRAINS, CHECK DAMS, CULVERTS, SWALES, SETTLEMENT PONDS AND BUFFERED OUTFALLS/LEVEL SPREADERS ARE SHOWN AS INDICATIVE AND MAY BE CHANGED TO SUIT THE REQUIREMENTS OF THE LOCAL TOPOGRAPHY.
3. DOWN GRADIENT SLOPE BELOW BUFFERED OUTFALL/LEVEL SPREADER ONTO WHICH WATER WILL DISSIPATE TO HAVE A GRADE <6%.
4. SUPERVISING HYDROLOGIST OR ENVIRONMENTAL CLERK OF WORKS / ENVIRONMENTAL SCIENTIST TO OVERSEE INSTALLATION OF DRAINAGE FEATURES.
5. ALL DRAINAGE FEATURES SUBJECT TO INSPECTION & MAINTENANCE PLAN.
6. EROSION PROTECTION TO PREVENT SCOUR TO BE PROVIDED IN DRAINAGE CHANNELS WITH A CHANGE IN DIRECTION <130°, WHERE THE FALL EXCEEDS 1:40 AND AT ALL ROAD CROSSING CULVERT LOCATIONS, OR WHERE OTHERWISE DIRECTED BY THE SITE ENGINEER.
7. CONSTRUCTION PROCESSES THAT POSE RISK OF ACTIVATION OF SEDIMENT LADEN RUN-OFF TO BE HALTED DURING PERIODS OF EXTREME RAINFALL. NO EXCAVATION TO BE CARRIED OUT IN ADVANCE OF FORECASTED HEAVY RAINFALL.
8. MINIMISE STOCKPILING OF MATERIAL AND LOCATE ESSENTIAL STOCKPILES OUTSIDE BUFFER ZONES AND AS FAR AWAY AS POSSIBLE FROM WATERCOURSES.
9. "ENTEXOL SCS001" OR SIMILAR APPROVED OIL SENSITIVE BUND DEWATERING SYSTEM (1 L/S WITH LOW SHEAR VORTEX PUMP WITH OIL SENSITIVE DETECTION. "ENTEXOL SCS002" OR SIMILAR APPROVED INTEGRATED CLASS 1 FULL RETENTION OIL SEPARATOR WITH INDEPENDENT CERTIFICATION OF COMPLIANCE TO BS EN 858

0	13/06/18	ISSUED FOR PLANNING	TOR	RMG	DC	AD	
REV	DATE	REVISION DESCRIPTION	DRN	PROD	VER	APP	

© COPYRIGHT © ESB INTERNATIONAL LIMITED
ALL RIGHTS RESERVED. NO PART OF THIS WORK MAY BE MODIFIED, REPRODUCED OR COPIED IN ANY FORM OR BY ANY MEANS - GRAPHIC, ELECTRONIC OR MECHANICAL, INCLUDING PHOTOCOPIING, RECORDING, TAPING OR USED FOR ANY PURPOSE OTHER THAN ITS DESIGNATED PURPOSE, WITHOUT THE WRITTEN PERMISSION OF ESSI ENGINEERING & FACILITY MANAGEMENT LTD. TRADING AS ESB INTERNATIONAL.

PURPOSE OF ISSUE - PRELIMINARY UNLESS INDICATED
 CLIENT APPROVAL PLANNING TENDER CONSTRUCTION AS-BUILT

CLIENT
**ESB WIND DEVELOPMENT LTD
AND BORD NA MONA POWERGEN LTD**

PROJECT
TIMAHOE NORTH SOLAR PROJECT

CONTRACT

DRAWING TITLE
**DRAINAGE LAYOUT
SHEET 5 OF 5**

PRODUCTION UNIT
CIVIL & ENVIRONMENTAL ENGINEERING

I:\CAD Director\001 - AutoCAD Standard Objects\appc\Airport_2017_1\app\ESB Title Blocks AD A1 L P.dwg

DRAWN T O'Rourke	PRODUCED R McGowan	VERIFIED D. Cody	APPROVED A. Downey	APPROVAL DATE 13/06/2018
CLIENT REF	NO. OF SHTS 1	SIZE A1	SCALE 1:2500	

DRAWING NUMBER
QS-000218-01-D453-020